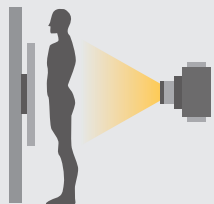
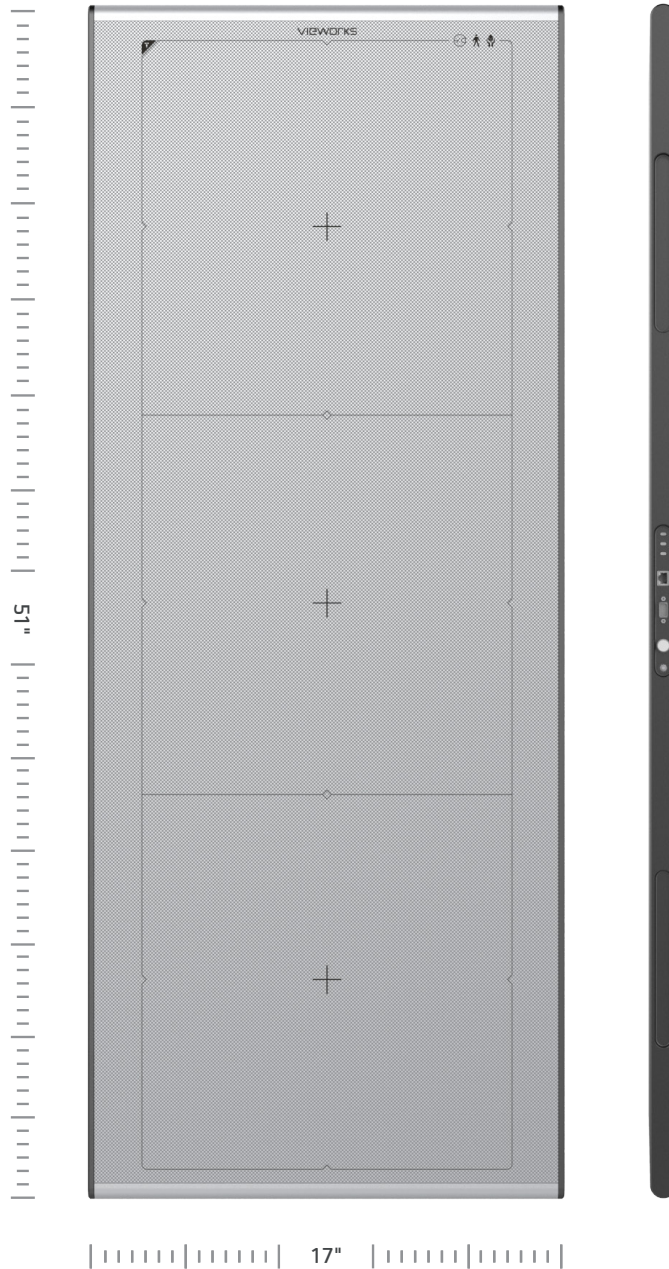


# VIVIX-S 1751S

Long Format X-ray Flat Panel Detector



Single-shot exposure  
for 17" x 51" image



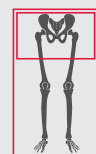
High Resolution



Fast Scan



Full Spine Scan

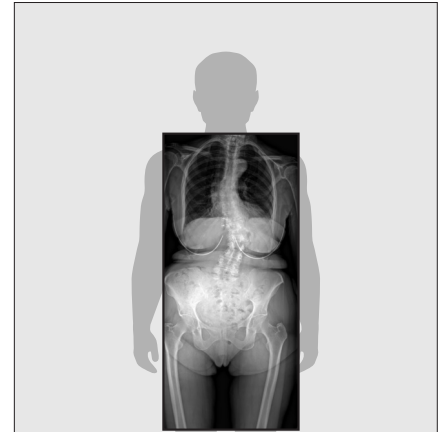


Multi-Scan Mode

## Features

- Long & wide active area for one-shot long bone and full spine scan (17" × 51")
- Superior image quality with 140 μm pixel pitch
- Streamlined workflow with short scan time (<10 sec.) and fast image acquisition time (8 sec.)
- Multi-scan mode for selective body part imaging
- Various applications such as general radiography, orthopedic, and chiropractic x-ray systems

## Drawing



## Specifications

Model	FXRD-1751SB		
Technology	a-Si TFT		
Scintillator	Gadox		
Pixel Pitch	140 μm		
Spatial Resolution	3.5 lp/mm		
Pixel Matrix	3072 × 9216 pixels	3072 × 6144 pixels	3072 × 3072 pixels
Image Size	17" × 51" (43.0 cm × 129.0 cm)	17" × 34" (43.0 cm × 86.0 cm)	17" × 17" (43.0 cm × 43.0 cm)
Grayscale	16 bits		
Image Acquisition Time	8 sec.		
Recommended Cycle Time	15 sec.		
Data Interface	Gigabit Ethernet		
X-ray Generator Interface	DR Trigger Mode / AED Mode		
Dimensions	135.7 cm × 53.2 cm × 3.0 cm		
Weight	19.7kg		
X-ray Voltage Range	40 – 150 kVp		
Operating Environment	10°C to 35°C 30 % to 85 % RH (non-condensing)		
Power Consumption	DC 24V, 3.0A		

\* Specifications are subject to change without prior notice.